

Farm Retirement

AUCTIONEER'S NOTE: Chris has decided to retire. Most equipment was purchased new and had excellent maintenance. Registration, terms, & details at SteffesGroup.com.
LOCATION: From Sargeant, MN, 1.5 miles east on 310th St., 1.5 miles north on 640th Ave. 32337 640th Ave., Sargeant, MN 55973
PREVIEW: By Appointment / **LOADOUT:** By Appointment

AUCTION

TIMED ONLINE

OPENS: WEDNESDAY, MARCH 13 / CLOSSES: THURSDAY, MARCH 21 | 7PM 2019



S&S FARMS

For information contact Chris 507.216.2637
 or Eric Gabrielson at Steffes Group, 320.693.9371 or 701.238.2570



TRACK TRACTORS

2011 John Deere 8360RT, IVT, deluxe CommandView cab, leather trim, 5 hyd., 60 gpm hyd. pump, 3 pt., quick hitch, 1000 PTO, integrated auto steer ready, 7" display, dual beam radar, premium radio pkg., power mirrors, Sturd-E-Built rock box, HD drawbar, HID lights, beacon light kit, cold weather pkg., (10) belly weights, 3500 Series 16" belts, 2,596 hrs., S/N1RW8360RTBD905820

2011 John Deere 8360RT, IVT, deluxe CommandView cab, leather trim, 4 hyd., 60 gpm hyd. pump, 3 pt., quick hitch, 1000 PTO, integrated auto steer ready, 7" display, dual beam radar, premium radio pkg., power mirrors, Sturd-E-Built rock box, HD drawbar, HID lights, beacon light kit, cold weather pkg., (10) belly weights, 5500 Series 25" tracks, 2,300 hrs., S/N1RW8360RTBD905529

2008 Caterpillar MT855B 5 hyd., auto steer ready, wide swing draw bar, steering wheel controls, power mirrors, tool-box, HID lights, (22) front weights, 30" belts, 3,465 hrs., S/NKAGCC0855CNTJG1028, single owner, inspected & service by Ziegler Cat, 2019 inspection report available

2WD TRACTOR

1968 John Deere 4020D wide front, open station, syncro, 2 hyd., 3 pt., 540/1000 PTO, John Deere 148 all hyd. loader, w/ general purpose bucket, flat-top fenders, Goodyear 13.6-16.1 turf front tires, 14.9-38 rear tires, 1,502 hrs., S/N181868R

COMBINES

2014 Caterpillar Lexion 750TT, APS Hybrid, PRWD, Ag Leader auto steer, hydro, HP feeder house, auto pilot, 3D sieve, single point hookup, 36" tracks, Goodyear 28L-26 rear tires, 500 sep. hrs., 770 engine hrs., S/NC6800394, single owner, bought new in 2015, inspected & serviced by Ziegler Cat, 2019 inspection report available

2008 John Deere 9870 STS, premier cab, Contour-Master, 2 spd. PRWD, Intelligent Power Management system, GreenStar ready, bullet rotor, 5 spd. feeder house, HD final drive, fine cut chopper, Maurer hopper topper, chaff spreader, high cap. lift cylinder, high cap unload, HID lights, beacon lights, ext. wear pkg, single pt. hookup, Goodyear 20.8R42 front tires w/duals, Goodyear 28L-26 rear tires, 1,594 sep. hrs., 2,337 engine hrs., S/NH0D9870S730212, will have 2019 inspection

HEADS

2015 John Deere 640FD flex draper, 40', 1-1/2" cut, hyd. fore/aft., flex shafts, single pt. hookup, John Deere hookups, off John Deere 9870 combine, S/N1H0640DFHF075499

2015 MacDon FD75-D flex draper, 45', 3" cut, single pt. hookup, Case-IH Flagship adapter included, Caterpillar 750TT hookup, includes new center belt, S/N2802752009

John Deere 612C non-chopping corn head, 12x30", Row-Sense, Headsight Insight, hyd. deck plates, calmer stalk rolls & deck plates, Caterpillar 750TT combine hookup, S/NH0612CX730679

2008 John Deere 612C chopping corn head, 12x30", hyd. deck plates, flex shafts, (12) Lankota stalk stompers, single pt. hookup, S/NH0612CC725209

MOWER

John Deere CX-15 batwing mower, 15', small 1000 PTO, pneumatic tires, S/NPOCS15F008819

PLANTERS

2012 John Deere 1770NT planter, CCS, 24x30", 2 pt. hitch, VacuMeter, hyd. variable rate, RowCommand, pneumatic down pressure, 500 gal. liquid fertilizer tank, ground drive fertilizer pump, on board compressor, Precision e-Sets, rear hyd., fungicide applicator, Unverferth seed loading conveyor (hyd. drive), Dawn row cleaners, Precision corn/bean plates, markers, extra lights, approx. 12,000 acres, used 2630 display (not included), S/N1A01770ELBM7453322

2011 John Deere DB60, CCS, 24x30", VacuMeter, hyd. variable rate, RowCommand, pneumatic down pressure, liquid fertilizer, (2) 500 gal. fertilizer tanks, Refuge Plus tank, ground drive pump, Dawn row cleaners, Precision e-Sets, 20/20 SeedSense, Redball monitor, Precision corn/bean plates, markers, extra lights, used 2630 display (not included) S/N1PAM2630EA0740102

ROCKPICKER

2007 Rite-way RR250 reel type rockpicker, hyd. swing hitch, S/N07-25700

2017 Schulte 2500 Giant reel-type rockpicker, 16.5L-16.1SL tires, S/NR10011225611, used one season

TILLAGE EQUIPMENT

2013 John Deere 2410 chisel plow, 41', 16" spacing, 2" points, full floating hitch, Raven dual cooler cold flow, John Deere rate controller, 3-bar harrow, rear hitch w/winch, (4) gauge wheels, set up to pull (2) tank trailer, S/N1N02410XZVD0752568

Wil-Rich V957DDR disc ripper, 7 shank, 10" points, 3-bar heavy duty harrow, 425/60R22.5 tires, S/N458283

2012 John Deere 3710 auto reset plow, 10 bottom, flex frame, spring loaded ripple coulters, covering boards, S/N1N03710XJB0740166

Summers land roller, 45', vertical wing fold, S/NG0691, 2 seasons all new bearings

2010 Krause 8200 disc, 36', 23-1/2" average blade size, rock flex, (2) front gauge wheels, (3) seasons on New blades, S/N8200-36W-1605

John Deere BWF disc, 20', manual wing fold

Case-IH DMI Tigermet II field cultivator, 50', double wing fold, 7" knock-on sweeps, tandems on mains & wings, 4-bar harrow, S/NJFH0013755

John Deere 980 field cultivator, 45', 7" knock-on sweeps, 3-bar harrow, (2) gauge wheels, S/NX009247

2011 Krause TL 6200 Landsman soil finisher, 45', 10" knock-on points, 9" spacing, rolling baskets, 3-bar harrow, re-built seal kits in cylinders on disc gangs, S/NTL6200-45-2082

TRUCKS

1999 Volvo VNL64T integrated sleeper, 60 Series Detroit, 430 hp., Eaton Fuller RTX 9 spd., Jake brake, air ride, air slide 5th wheel, diff lock, 1/4 fenders, 3:70 ratio, 220" WB, 285/75R24.5 front tires on aluminum rims, 285/75R24.5 rear tires on all aluminum rims, 196,681.5 miles, S/N4VGD7DARH6XN769611

1993 Kenworth T600 day cab, 12.7 Detroit, 13 spd., Jake brake, 8-bag air ride, air slide 5th wheel, cruise, diff lock, sunroof, CD player, dual tanks, dual exhaust, headache rack, full fenders, 238" WB, 11R22.5 tires on aluminum rims, 111,739 miles, S/N1XKADR9X9PS583975

1989 White-GMC day cab, Detroit engine, 7 spd., spring ride, air slide 5th wheel, cruise, 1/4 fenders, 295/75R22.5 front tires on Dayton rims, 295/75R22.5 rear tires on Dayton rims, 842,379 miles, S/N4V1VDBRE7KN617374

1979 Mack MC685 water/chemical tender, cabover, Mack 300 hp., Ranger 10 spd., spring ride, wet kit, (2) 1,600 gal. cone bottom tank, Honda GX200 pump, Dayton 385/65R22.5 front tires, 11R22.5 rear tires on Dayton rims, 161,214 miles, S/NMCM685S1099

TRUCKS

2002 Chevrolet 3500 Duramax, dually, 6.6L, diesel, 4WD, automatic, cloth interior, power windows & locks, Crysteel 92"x102" flatbed, running boards, 5th wheel ball hitch, 215/85R16 tires on steel rims, 215,512 miles, S/N1GCJK33142F135227

GRAIN CART

2010 Kinze 1050 Harvest Commander, hyd. spout, double extension, scale, tarp, Digi-Star GT400 display, (3) cameras, extra lights, steel idlers, SCF 36" tracks, S/N508189, single owner

HOPPER BOTTOM TRAILERS

2017 Timpte hopper bottom trailer, 40', ag hopper, air ride, electric roll tarp, site windows, 11R24.5 tires on all aluminum rims, S/N1TDH40021HB154614

2005 Wilson DWH-500c, 41'x66"x96", ag hopper, air ride, belt drive traps, power tarp, site windows, 11R24.5 tires on all aluminum rims, S/N1W1SAFYAX5A240802

1999 Wilson DMH-400c, 41'x66"x96", ag hopper, air ride, belt drive traps, electric roll tarp, site windows, 11R24.5 tires on all aluminum rims, S/N1W1SAFYA5ZA229757

HEADER TRAILERS

Stud-King D-42 header trailer, 42', torsion bar axle, 6-wheel, S/N3061

Maurer M38 header trailer, 38', torsion bar axle, 6-wheel, 225/75R15 tires, S/NB7417

Maurer M36 header trailer, 36', w/24" extension, torsion bar axle, 6-wheel, 9.5L-15 tires, S/N3850

Unverferth HT30 header trailer, 30', 4-wheel, 22.5x8.0x12 tires, green

OTHER TRAILERS

1987 Lufkin van trailer, 28', spring ride, (2) 2,000 gal. tanks, Honda pump, (2) induction cones, 11R22.5 tires, S/N76129

Shop-Built bumper hitch fuel trailer, 500 gal., 12v pump, auto shut-off, tool/oil storage box, on 4-wheel running gear, needs tank repair on pump mount

FISH HOUSE

2016 Forest River Inc Grey Wolf 17MP, RV conversation ice house, 17', 6 holes, sleeps 6, LP furnace, A/C, fridge, freezer, stove, sink, toilet, shower, hot water heater, water tank, couch, dinette, (2) full size bunks, TV/DVD/radio, digital antenna, rubber floor, mood lighting, strobe light, awning, dual batteries, rear bay window, 225/75R15 tires, S/N4X4TCK719HK042076

TANK CADDY

2013 Behnke Enterprises tank caddy, (2) 3,000 gal. poly cone bottom tanks, w/Honda pump & Banjo fittings, on 2-wheel bumper hitch transport, 11L-15SL tires, S/N30891

LAWN & GARDEN

John Deere Z445 lawn tractor, 54" deck, 179.5 hrs., S/N1M0Z445CCCM120218

Pull-type lawn aerator/fertilizer lime spreader, on transport

Agri-Fab pull-type yard thatcher

Agri-Fab fertilizer spreader

GPS/NAVIGATION EQUIPMENT

Starfire ITC globe, SF1

Raven 450 monitor

Raven 710 monitor

Raven 440 monitor

John Deere 6000 globe, SF2

Digi-Star 3200 scale screen

Ag Leader Integra monitor

(2) Ag Leader insight monitor

John Deere 2630 display, SF1/SF2, section control, machine sync, S/NPCGU20A351385

John Deere 3000 globe, SF1

SKID STEER LOADER & ATTACHMENTS

2010 John Deere 328B skid steer loader, CAH, 2 spd., aux. hyd., hyd. quick tach, high flow, hand/foot controls, radio, weight package, 14-17.5 tires, 646.3 hrs., S/N1TC328DFV0200287

John Deere pallet forks, 48", skid steer loader mount, 84", bolt-on cutting edge

John Deere general purpose bucket, 84", bolt-on cutting edge

Walco snow bucket, 9', skid steer loader mount, S/N0814002

Quick tach receiver hitch, skid steer loader mount

John Deere TR60B trencher, high flow, skid steer loader mount, low hrs., S/N1TOTR60BEA0000002

FARM SUPPORT EQUIPMENT

Yetter seed system w/gas motor

Redball liquid insecticide tank, for John Deere planters

Lorenz MFG Company snowblower, 8', 2 stage, hyd. spout, twin auger, 540 PTO, S/N877-1433

FARM SUPPORT EQUIPMENT

Enduraplas UTV sprayer, 12v, w/folding booms, in shop-built cart

Shop-Built rock wagon, 4-wheel, w/implement tires

Yetter box stand, 4-tote, w/poly chutes

Demco 30' boom, x-fold, w/Demco tank

Top Air spray boom, 60', x fold, 3 pt. mount on stand, S/N13938

PARTS

(2) Pallets of Yetter NH3, closing wheels

Suitcase weights for John Deere 8000 Series tractors

John Deere 10-20-30 Series wheel weights

John Deere no till ripple disc openers, planter mount

John Deere pallet of chisel plow standards

John Deere misc. planter parts

NH3 hitch w/winch, for John Deere chisel plows

Honda 2" transfer pump

Caterpillar pallet front idler weights

TANKS & BARRELS

Poly tank, 200 gal., 2" Banjo fittings, yellow

Pallet of (2) 100 gal. tanks

Fast tank, 300 gal. w/Banjo fittings

Demco Side Quest saddle tank, 500 gal., w/mounts for John Deere 8335R

(2) Fuel barrels, 1,000 gal. each, 110v pumps/meter

Fuel barrel, 2,000 gal., 110v pump/meter

Fuel barrel, 200 gal. 12v, for pickups

TIRES & TRACKS

(4) Alliance 380/90R50, John Deere 8000 tires & rims, insides & duals at 95%

(4) BKT Agri-Max sprayer tires, fit Case-IH 650/65R38 tires at 95%

Goodyear 8000 Series 320/90R50 tires at 70%, 38" step-up rims, yellow rims

(2) Goodyear tractor turf tires, subcompact

(2) Firestone 14.9-38 tires w/band duals at 75%

(2) Caterpillar tracks, 20%, used

Registration, terms, & details at SteffesGroup.com.

SteffesGroup.com

Steffes Group, Inc., 24400 MN Hwy 22 S, Litchfield, MN 55355 320.693.9371



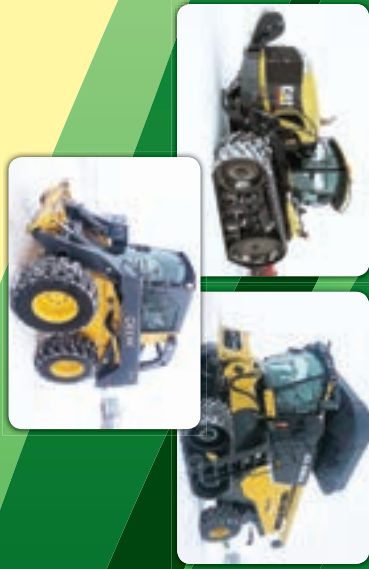
SteffesGroup.com



OPENS: WED., MARCH 13
CLOSES: THURS., MARCH 21
AT 7PM

Farm Retirement AUCTION

TIMED ONLINE



Farm Retirement
AUCTION
TIMED ONLINE

Steffes Group, Inc.
24400 MN Hwy 22 S
Litchfield, MN 55355



PRESCRIBED
US PACKAGE
PAID
PERMIT#4315
FARGO, ND



CLOSES: THURSDAY, MARCH 21 | 7PM 2019

S&S FARMS

For information contact Chris 507.216.2637
or Eric Gabrielson at Steffes Group, 320.693.9371 or 701.238.2570

LOCATION: From Sargeant, MN, 1.5 miles east on 310th St., 1.5 miles
north on 640th Ave. 32337 640th Ave., Sargeant, MN 55973

PREVIEW: By Appointment / LOADOUT: By Appointment

COMPLETE TERMS, LOT LISTINGS AND PHOTOS AT STEFFESGROUP.COM



SteffesGroup.com

Ashley Huhn MN47-002, Randy Kath MN47-007, Eric Gabrielson MN47-006, Shelly Weinzell MN86-79, Scott Steffes MN14-51, Brad Olstad MN14-70, Bob Steffes MN14-09, Max Steffes MN03-57

